



The Clik-Clik™ Magnetic System

Manufacturers' easiest way to hang
ceiling signs without a ladder or lift

Think Lean ... Think Visual!

A well-organized ceiling signage program visually reinforces company policies, encourages continuous improvement, promotes problem solving and keeps employees focused on maintaining a lean environment.



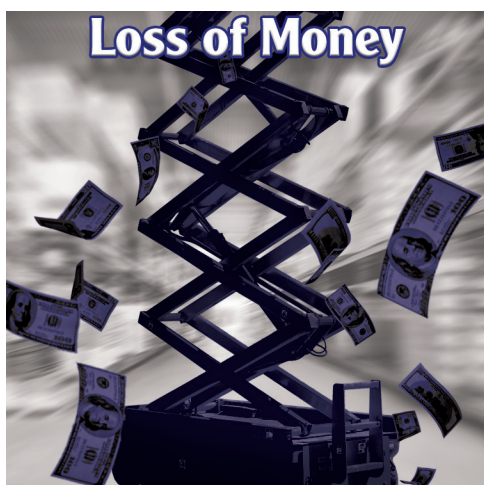
Ceiling Signs Make an Impact

- Identify production cells
- Implement wayfinding signs
- Increase productivity
- Improve safety awareness

Clik-Clik™ Makes it Easy

- Eliminate falls from ladders
- Safely reach up to 27-foot ceilings
- Signs hang level with LoopLine™
- All components are reusable

Three Challenges of Hanging Signs



Challenge: Renting a lift is expensive, and making room to use that equipment often means shutting down vital areas, disrupting the production line, and the excessive use of labor hours.

Hanging signs never feels like a good return on investment.

Ceiling Outfitters Solution: *Clik-Clik is affordable and cost-effective.*

Drive down plant operational costs, achieve an immediate ROI, and minimize interruptions by hanging signs quickly without a ladder or lift.

"The Clik-Clik System is easy to use. Our Maintenance Engineers do not have to drive electric scissor lifts onto our shop floor to put up new signs. The ME's can do all their sign hanging work while standing on the floor. I invested in a starter kit and became an instant hero."

— David/Value Stream Manager

Challenge: Assigning multiple employees to the time-consuming task of hanging or changing signs creates a loss in productivity and affects profitability.

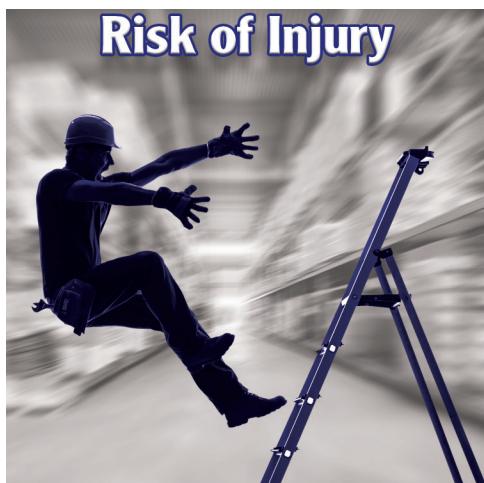
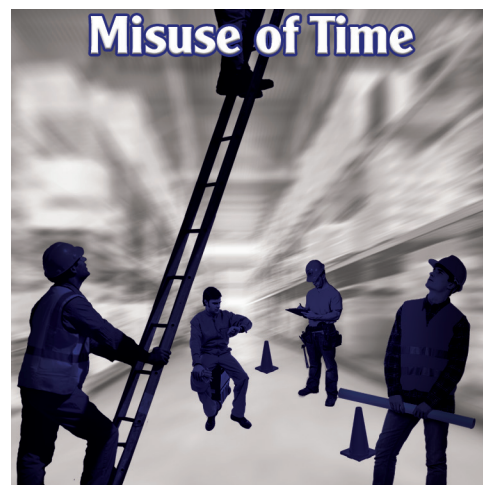
Hanging signs never feels like a good use of resources.

Ceiling Outfitters Solution: *Clik-Clik is quick and efficient.*

Reduce installation time by up to 70% and regain control of staff scheduling by assigning one employee to hang ceiling signs in just four easy steps.

"We use Clik-Clik for sign management in a busy raw materials storage area. Our previous signs were floor-based and had to be moved each time a pallet was placed or retrieved. Now the operators stay on their (fork)lifts, saving countless amounts of time and energy. Our ceiling-based signs can easily be changed in 5 minutes from the safety of the floor with your quick attach and leveling components which support our visual workplace program."

— Production Supervisor/Food Packaging Manufacturer



Challenge: Every year, over 100 people in the workforce die in ladder-related accidents and thousands more are injured. Carrying items up a ladder exposes employees to the threat of injury resulting from a split-second loss of balance and fall.

Hanging signs always feels like a hazardous endeavor.

Ceiling Outfitters Solution: *Clik-Clik is simple and safe.*

Decrease exposure to accidents and liability as workers in any industry can use the ladderless system to hang and remove signs while keeping their feet firmly on the ground.

"I walked up to the Ceiling Outfitters booth at the 2017 ProMat show and I am glad I did! The products provided by Ceiling Outfitters have had a powerful impact on my warehouse layouts and efficiencies. By far, one of the best investments for safely organizing a warehouse."

— Bill/Global Warehousing Manager

Clik-Clik™ is the Solution

The unique Clik-Clik™ Magnetic Sign Hanging System ends the need to climb a ladder or rent a lift for sign installation. A single individual can confidently connect signs to the ceiling from the safety of the floor using the Clik-Clik System. Attach signs to strong neodymium ClikMagnets™ with our patented LoopLine™ cord then use the MagMover™ and telescoping MagPole™ to lift them into place and later retrieve them.

Over 22,000 manufacturing and retail locations nationwide have solved their sign-hanging challenges with the professional-grade design features and functionality of the best sign-hanging solution in the marketplace — Clik-Clik.

1. Choose a MagPole™

- Durable Aluminum and Fiberglass Construction
- Lightweight and Easy to Maneuver
- Telescoping Sections Lock into Place
- Collapsible for Easy Transportation and Storage

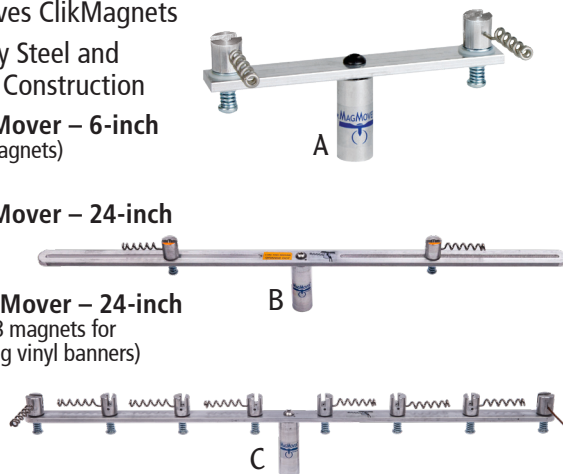
- A) **One-Button MagPole**
10-11702 (for ceilings up to 14ft)
- B) **MagPole Mini**
10-18012 (for ceilings up to 16ft)
- C) **MagPole**
10-18000 (for ceilings up to 23ft)
- D) **Monster MagPole**
10-18023 (for ceilings up to 27ft)



2. Select a MagMover™

- Securely Transports and Retrieves ClikMagnets
- Heavy Duty Steel and Aluminum Construction

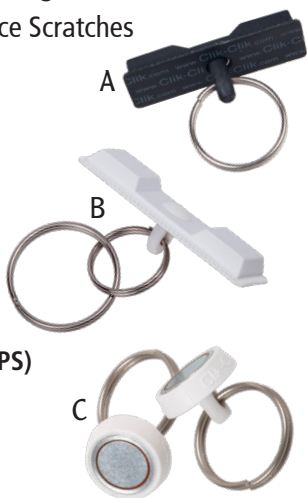
- A) **Dual MagMover – 6-inch**
(holds two magnets)
10-10402
- B) **Dual MagMover – 24-inch**
(adjustable)
10-12402
- C) **Multi-MagMover – 24-inch**
(holds up to 8 magnets for installing long vinyl banners)
10-10408



3. Add ClikMagnets™

- Connect to Any Metal Surface
- Use on Drop or Open-Beam Ceilings
- Plastic Coating Prevents Surface Scratches
- Strong Neodymium Magnet
- Available in Four Magnetic Pull Strengths (PS)

- A) **Regular ClikMagnet (5-lb PS)**
(Black) (White)*
10-94300 10-94299
- B) **Super ClikMagnet (10-lb PS)**
(Black)* (White)
10-95288 10-95277
- C) **Round Red ClikMagnet (20-lb PS)**
(White with Red Embedded Ring)
10-95600



*Not Pictured

4. Include LoopLine™

- Quick and Simple to Attach; No Knots to Tie
- Reduce Set-Up Time
- Signs Always Hang Level
- Available in Two Tensile Strengths (TS)

- A) **LoopLine – White (25-lb TS)**
(82-ft spool)* (328-ft spool)
10-70133 10-70123
- B) **LoopLine – Black (25-lb TS)**
(82-ft spool)* (328-ft spool)
10-70144 10-70124
- C) **LoopLine – Clear (25-lb TS)**
(82-ft spool)* (328-ft spool)
10-70166 10-70126
- D) **LoopLine Light – Clear (10-lb TS)**
(164-ft spool) (508-ft spool)*
10-70165 10-70168

*Not Pictured



877.866.2545

Take Control of Steel Cable With UrbanTrapeze®



Create secure connections for installations with our adjustable UrbanTrapeze Cable Grippers.

Each UrbanTrapeze Cable Gripper securely attaches to 7x7 uncoated galvanized steel cable using a built-in brake. Make adjustments by pressing the clutch button and eliminate the need for crimps, ferrules or traditional aircraft cable fittings.

- Compact and self-locking
- Unlock and level with the push of a button
- Install signs, banners, acoustic panels, and decorative lighting
- Ideal for retail installations and electrical, construction and HVAC contractors

In-Line Loop Model 1.5

- Form a secure connecting loop in $\frac{1}{16}$ -inch steel cable
- Holding power up to 48 lbs

In-Line Loop Model 3.0

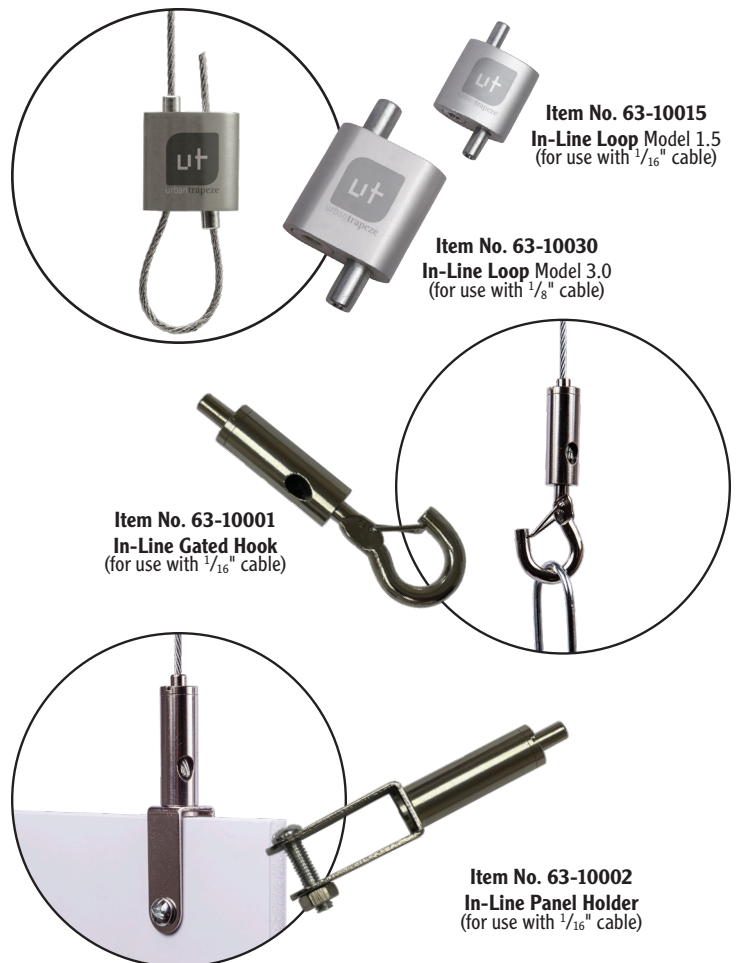
- Form a secure connecting loop in $\frac{1}{8}$ -inch steel cable
- Holding power up to 170 lbs

In-Line Gated Hook

- Hook closes with spring-loaded gate
- Rated at 35-lb pull

In-Line Panel Holder

- Works with .375-inch thick materials
- Screw inserts through pre-punched holes
- Rated at 35-lb pull



Also Available Through Ceiling Outfitters



- $\frac{1}{8}$ and $\frac{1}{16}$ -inch aircraft quality 7x7 uncoated steel cable; available in 100-foot, 250-foot, 500-foot, and 1,000-foot* spools
 - Felco® brand cable cutter, cuts up to $\frac{3}{16}$ -inch diameter cable without fraying
- *1,000-foot spools for $\frac{1}{16}$ -inch cable only

Meet Taller Ceilings Halfway With the FlatHat™ System

For very tall ceiling solutions, reach out to us to learn about the FlatHat System and we'll help you create a connection point you can reach.



Item No. 10-95500